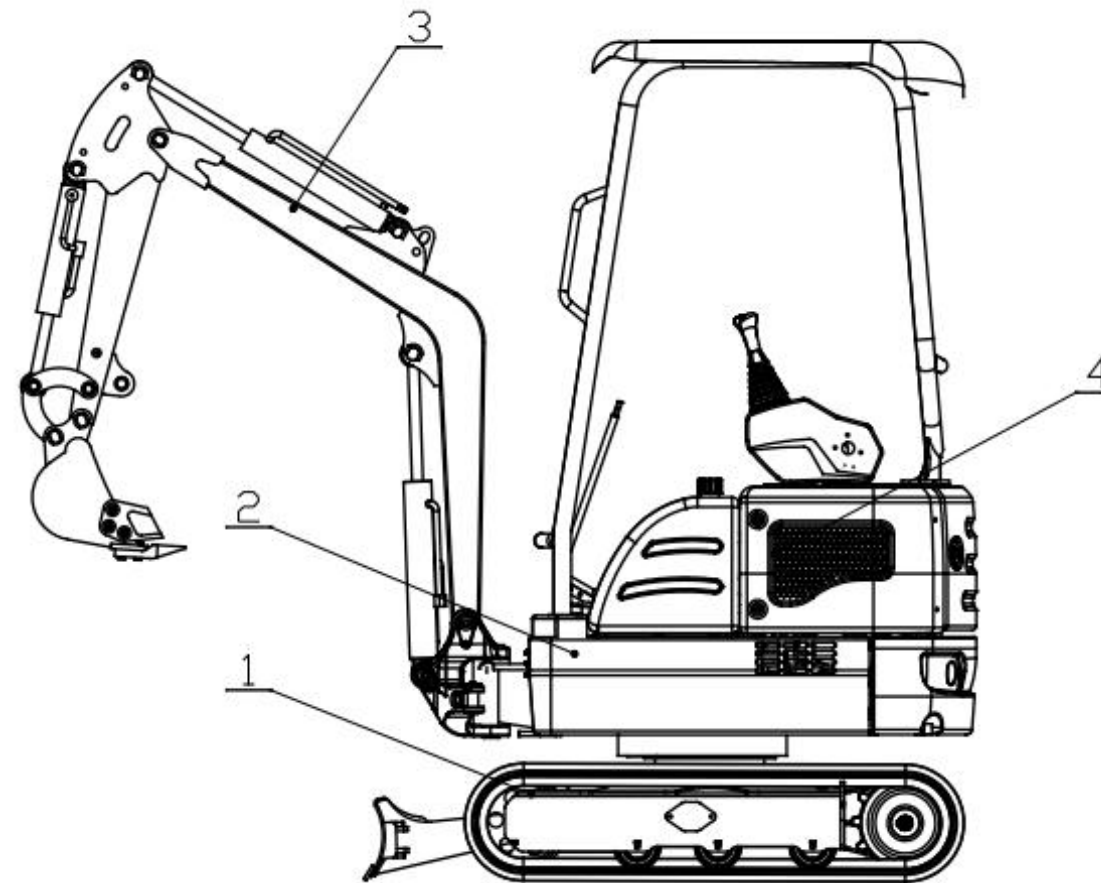
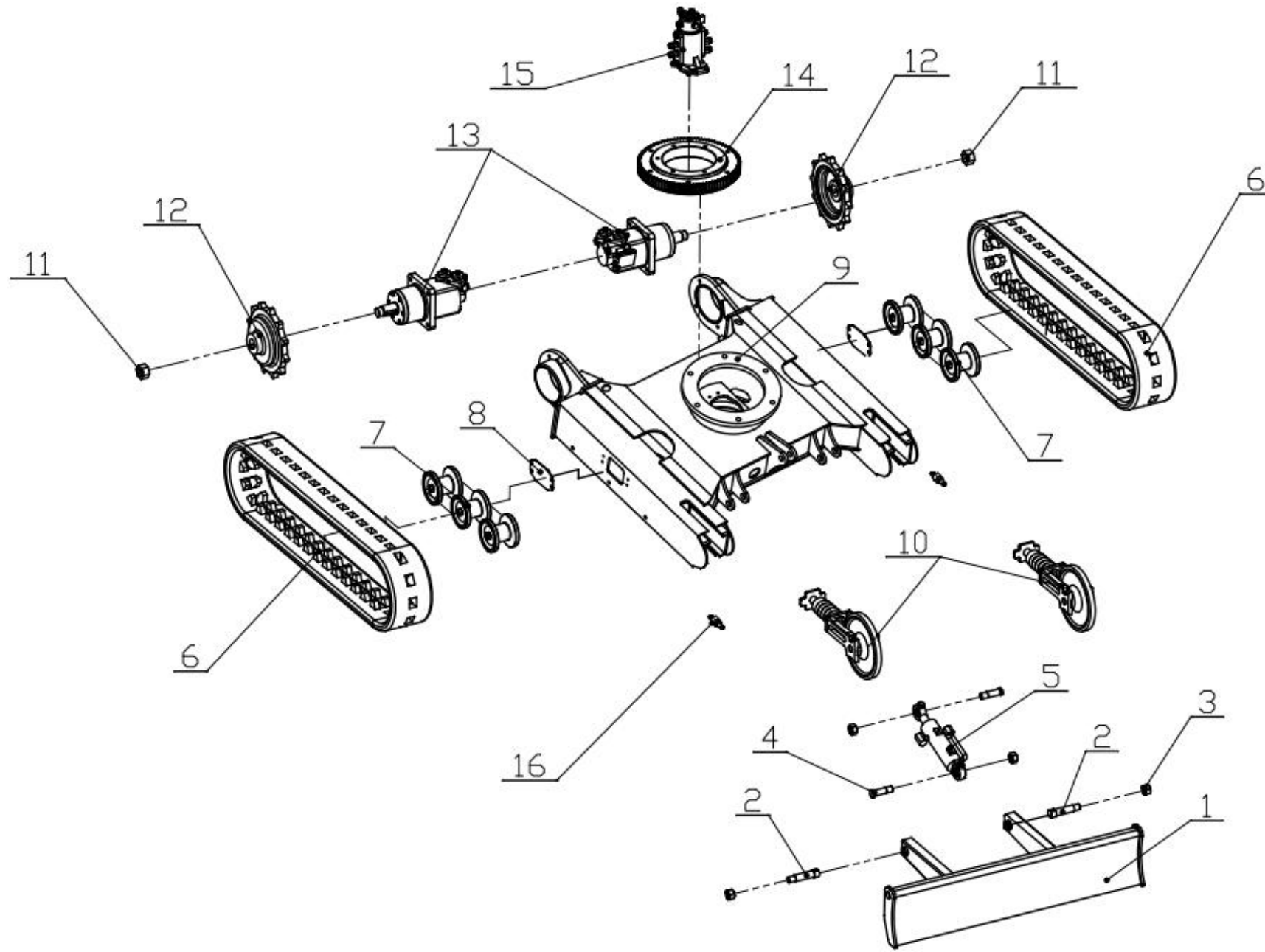


CX15B spare parts drawings



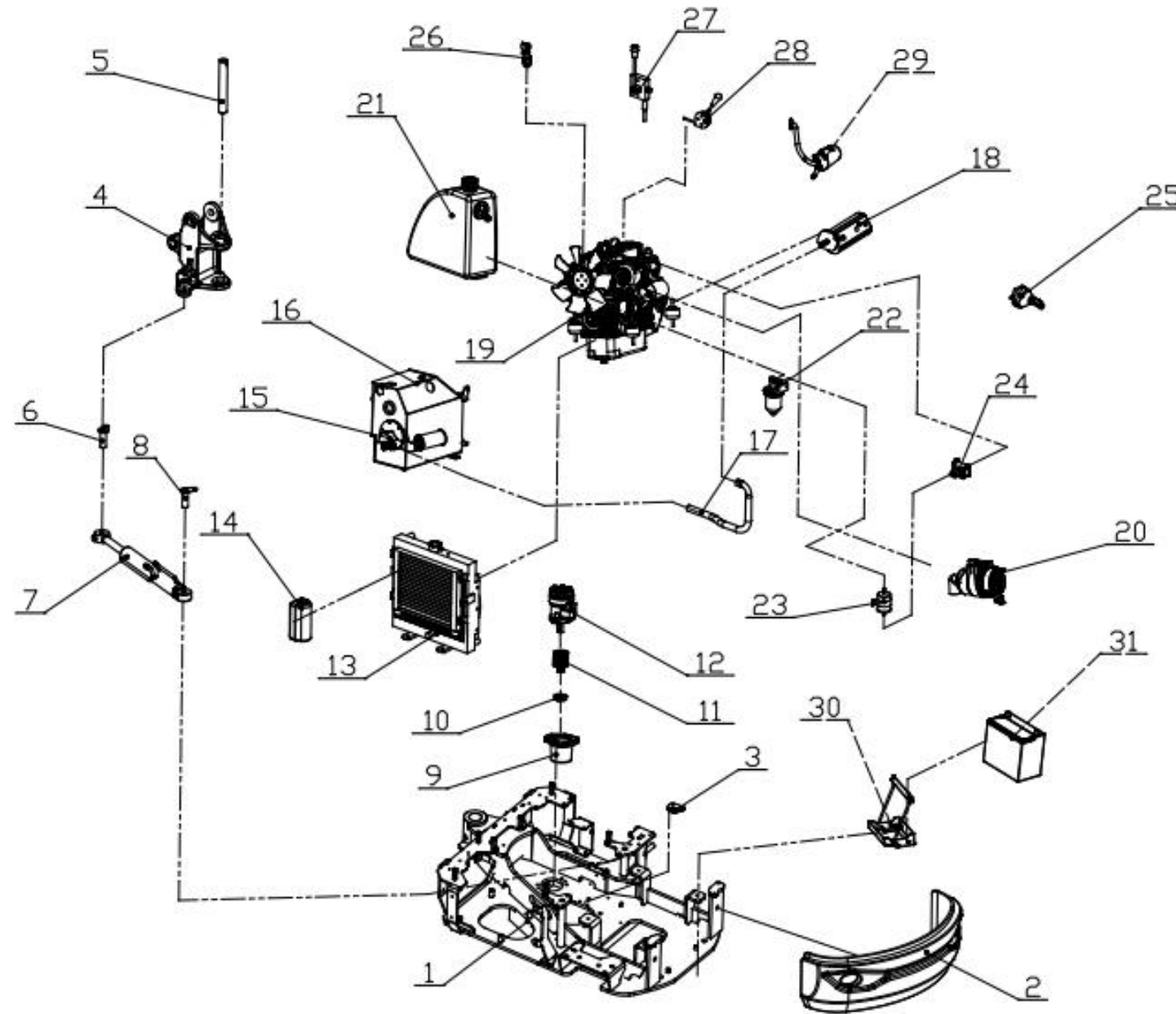
1	CX15B0.1	Chassis assembly	1
2	CX15B0.2	Platform assembly	1
3	CX15B0.3	Working device	1
4	CX15B0.4	Platform assembly	1

1.CHASSIS ASSEMBLY



1	CX15B1.1	Push shovel	1
2	CX15B1.2	Push Shovel Pins	2
3	CX15B1.3	Nut M22	4
4	CX15B1.4	Push Shovel hydraulic cylinder pins	2
5	CX15B1.5	Push Shovel hydraulic cylinder	1
6	CX15B1.6	Rubber Track	2
7	CX15B1.7	Track Roller	6
8	CX15B1.8	Dust cover	2
9	CX15B1.9	Chassis	1
10	CX15B1.10	Tension pulley	
11	CX15B1.11	Nut	2
12	CX15B1.12	Travelling Roller	2
13	CX15B1.13	Travel Motor	2
14	CX15B1.14	slewing support	1
15	CX15B1.15	Center slewing Joint	1
16	CX15B1.16	Check valve	2

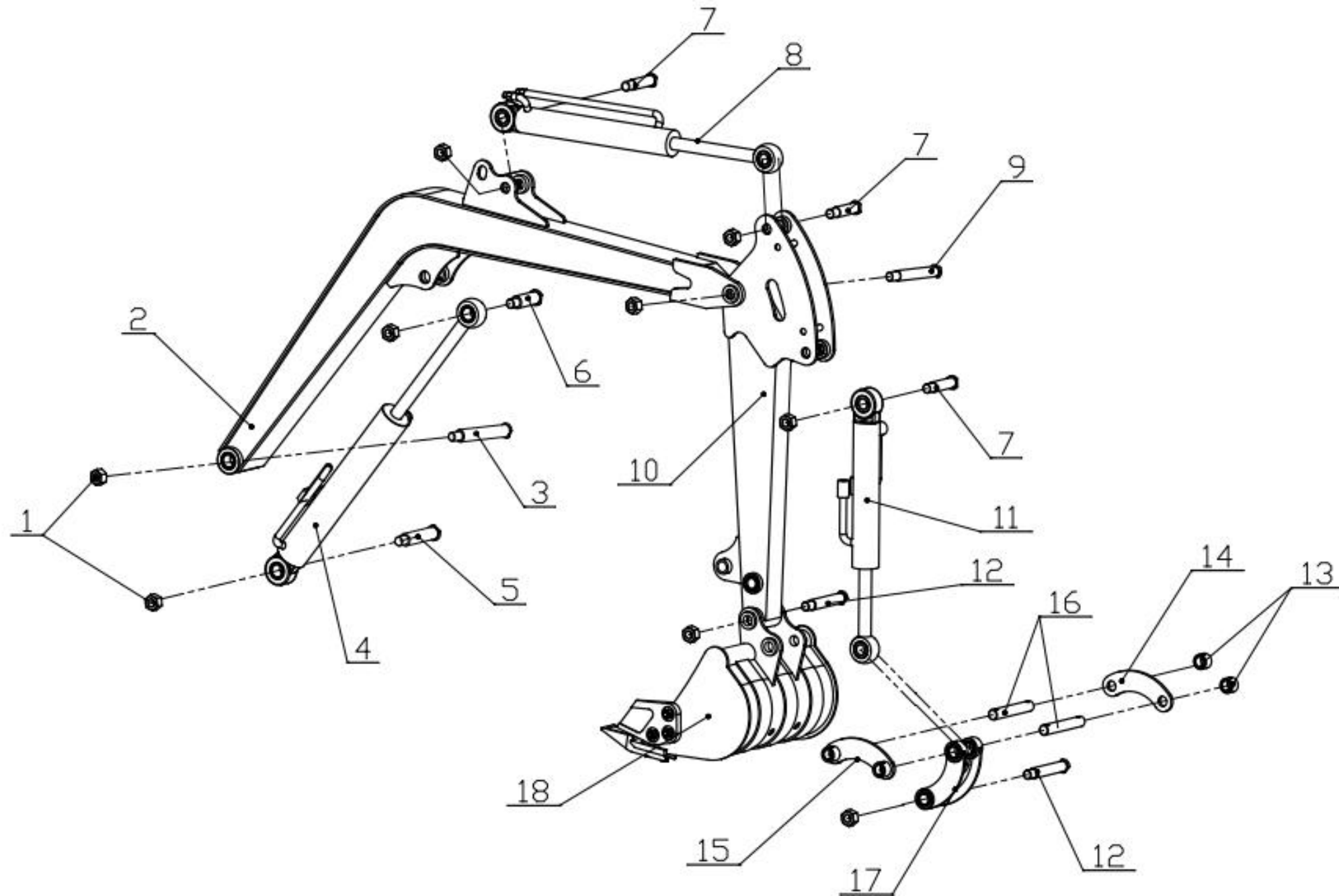
2.Upper Carriage Assembly



1	CX15B2.1	Platform	1
2	CX15B2.2	Counter weight block	1
3	CX15B2.3	Chock block	1
4	CX15B2.4	Deflection head	1
5	CX15B2.5	Deflection head pin	1
6	CX15B2.6	Deflection cylinder pin A	1
7	CX15B2.7	Deflection cylinder	1
8	CX15B2.8	Deflection cylinder pin B	
9	CX15B2.9	Vibration block	2
10	CX15B2.10	Bearings 6205	1
11	CX15B2.11	Gear	1
12	CX15B2.12	Gerotor motor	1
13	CX15B2.13	Oil water heat exchanger	1
14	CX15B2.14	Kettle	1
15	CX15B2.15	Oil filter	1
16	CX15B2.16	Hydraulic fluid chamber	1
17	CX15B2.17	Oil inlet	1

18	CX15B2.18	Triple pump553	1
19	CX15B2.19	KUBOTA D902	1
20	CX15B2.20	Air filter	1
21	CX15B2.21	Diesel fuel tank	1
22	CX15B2.22	Oil-water separator	1
23	CX15B2.23	Diesel filter	1
24	CX15B2.24	Electronic suction pump	1
25	CX15B2.25	Main switch	1
26	CX15B2.26	Diesel engine key	1
27	CX15B2.27	Push shovel handle	1
28	CX15B2.28	Hand throttle	1
29	CX15B2.29	Exhaust pipe	1
30	CX15B2.30	Battery support	1
31	CX15B2.31	Battery	1

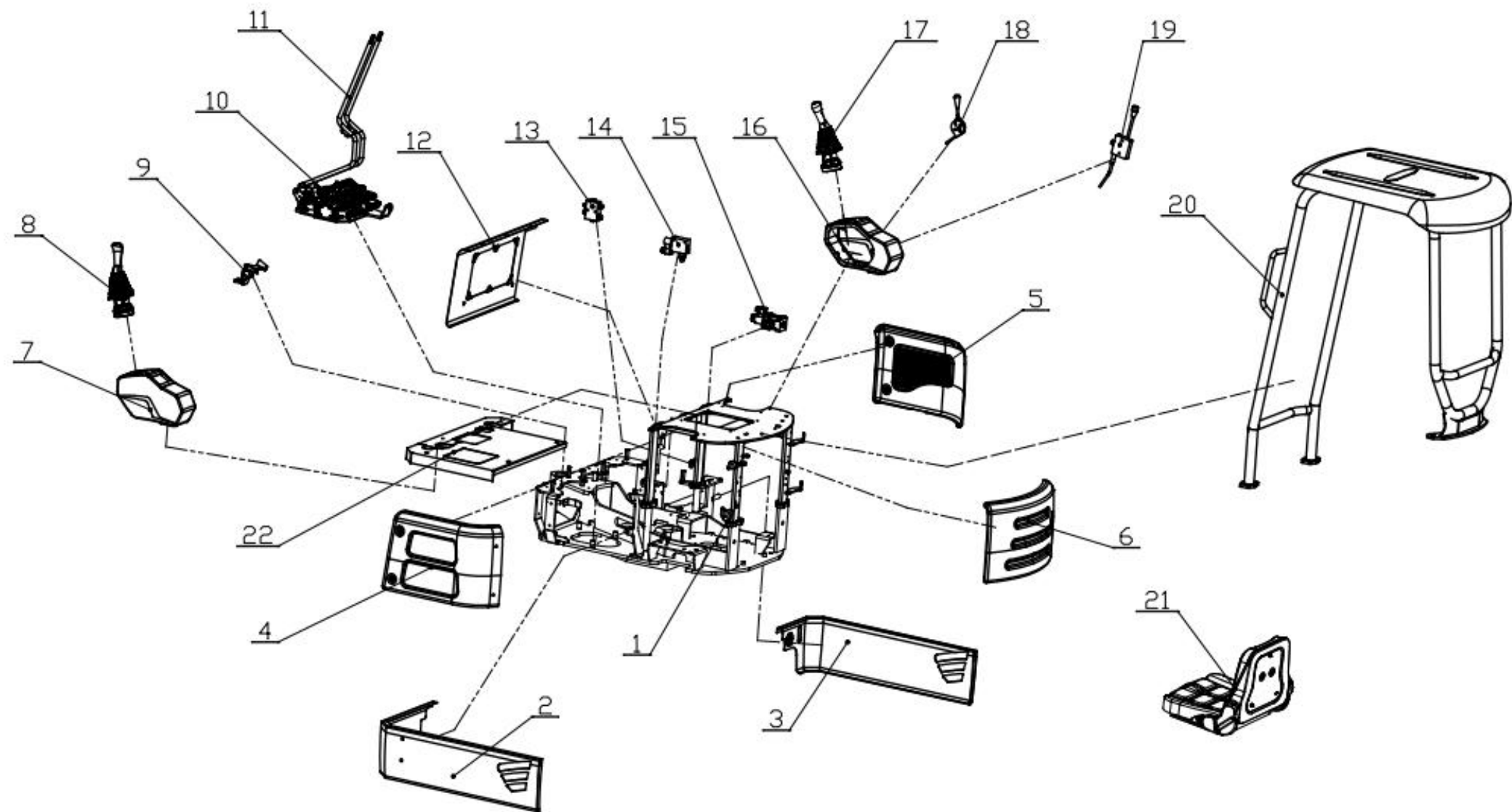
3.Boom&Arm Assembly



1	CX15B3.1	Nut M22	9
2	CX15B3.2	Boom	1
3	CX15B3.3	Boom pin	1
4	CX15B3.4	Boom hydraulic cylinder	1
5	CX15B3.5	Boom hydraulic cylinder Pin A	1
6	CX15B3.6	Boom hydraulic cylinder pin B	1
7	CX15B3.7	Arm hydraulic cylinder Pin	3
8	CX15B3.8	Arm hydraulic cylinder	1
9	CX15B3.9	Boom connected with the Arm Pin	1
10	CX15B3.10	Arm	1
11	CX15B3.11	Arm hydraulic cylinder	1
12	CX15B3.12	Bucket Pin	2
13	CX15B3.13	Connecting rod bolt	2
14	CX15B3.14	Right swing link	1
15	CX15B3.15	Left swing link	1
16	CX15B3.16	Connecting rod bolt	2
17	CX15B3.17	Connecting rod	1

18	CX15B3.18	Bucket	1
----	-----------	--------	---

4.Upper Chassis&Operation Assembly



1	CX15B4.1	Seat support	1
2	CX15B4.2	Left cover	1
3	CX15B4.3	Right cover	1
4	CX15B4.4	Engine left cover	1
5	CX15B4.5	Engine right cover	1
6	CX15B4.6	Rear cover	1
7	CX15B4.7	Left control box	1
8	CX15B4.8	Left pilot handle	1
9	CX15B4.9	Crushing pedal	1
10	CX15B4.10	Multiple way valve	1
11	CX15B4.11	Function lever	2
12	CX15B4.12	Front seal plate	1
13	CX15B4.13	Hydraulic lock	1
14	CX15B4.14	Oil source block	1
15	CX15B4.15	Two-position six-way solenoid valve	1
16	CX15B4.16	Right control box	1

17	CX15B4.17	Right pilot handle	1
18	CX15B4.18	Cable accelerator	1
19	CX15B4.19	Push shovel cable	1
20	CX15B4.20	Canopy	1
21	CX15B4.21	Seat	1
22	CX15B4.22	Foot pedal	1